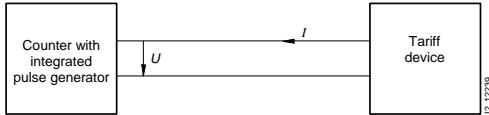


Schematics

S0 interfaces

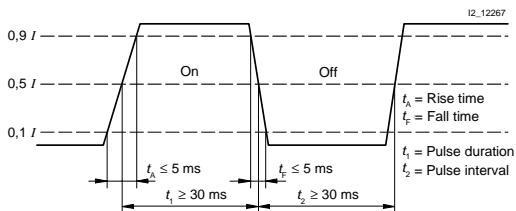
The S0 interface is a current interface for pulse transmission between a counter with integral pulse generator device and tariff rate device.



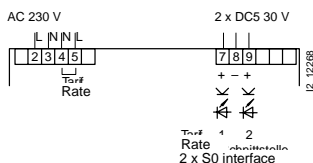
U : Voltage at terminals of the tariff device
 I : Current via counter with integrated pulse generator

The tariff rate device is connected to the S0 interface of the counter over a 2-wire conductor and - acting as a passive electrical two-pole - supplies the pulse generator with a direct current.

The following diagram shows the dependency of the current path on the time according to DIN 43864.



The following diagram shows the pulse output (S0 interface) for a 2-rate counter, e.g. tariff 1 normal tariff, Tariff 2 special tariff



The short-circuit resistant optocoupler is operated at 5 to 30 V DC. The current must be selected within a range of max. 20 mA. The pulse duration is 125 ms. The minimum pulse interval is also 125 ms.

Grounding terminal

The interpolation point grounding terminals required for the transmission technology only serve to shield the transmission cables and do not have a protective function.

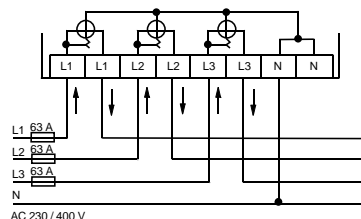
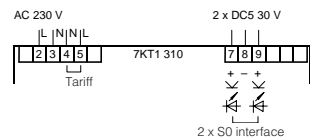
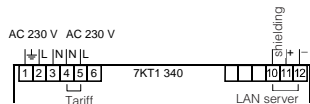
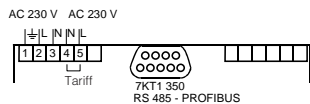
Instructions for the connection of transformer counters

In the case of cross-section reduction, a short-circuit resistant cable is required for the power supply of terminals 2, 5 and 8, depending on the fusing for phases L1, L2, L3. A fuse of 6 A is recommended for the line protection.

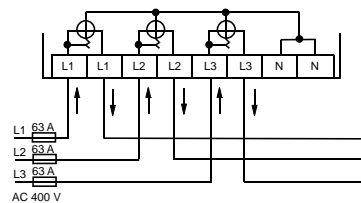
Current transformers must not be operated with open terminals as dangerously high voltages can occur, which may result in personal injuries and property damage. It may also lead to a thermal overload of the transformers.

Measuring devices

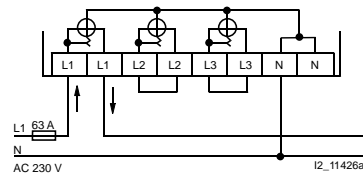
7KT1 3 Multicounters



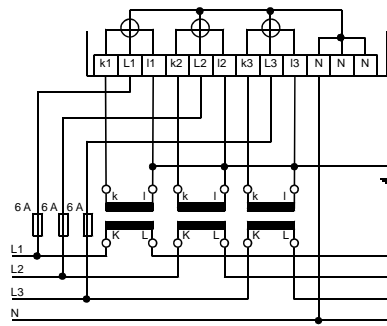
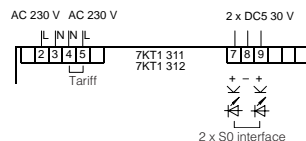
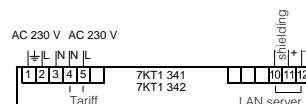
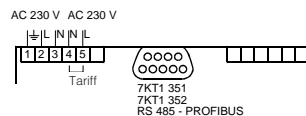
AC 230 / 400 V
Direct connection 63 A, 4-wire circuit



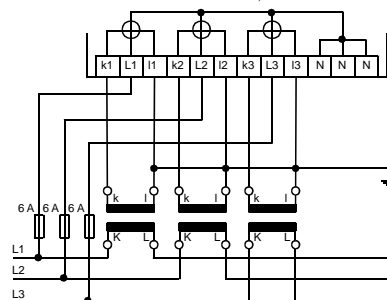
AC 400 V
Direct connection 63 A, 3-wire circuit



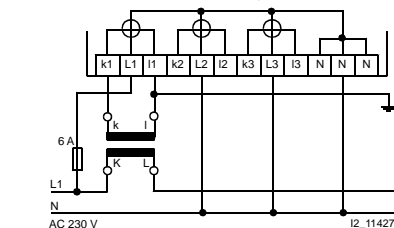
AC 230 V I2_11426a
Direct connection 63 A, 1-phase



AC 230 / 400 V
Current transformer connection, 4-wire circuit



AC 400 V
Current transformer connection, 3-wire circuit



AC 230 V I2_11427
Current transformer connection, 1-phase